

styker®

FHD Video Endoscope System

PLAMYRA STV-300



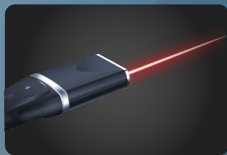
📍 16192 Coastal Highway, Delaware 19958, Sussex, USA
🌐 www.stykerr.com ✉ info@stykerr.com ☎ +1 567 404 5925



PLAMYRA STV-300

FHD Endoscope Imaging System

Pioneering the world's first laser communication application in the field of endoscopy. Continuing to enhance safety standards for endoscopic diagnosis and treatment.

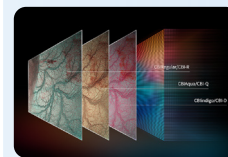


Laser Transmission

Experience cutting-edge innovation with laser communication endoscopes, shaping the future of medical imaging and communication

Wireless Power Supply

Enjoy wireless power in PLAMYRA STV-300 using non-radiative technology. Magnetic coupling resonance efficiently converts and transmits electricity, providing convenient energy transfer.



CBI Plus

Improve precancerous lesion detection using CBI . Emitting 440nm and 540nm light enhances hemoglobin absorption, adding color to vessels and fibers. Advanced imaging yields sharp, clear close-ups for accurate diagnosis.

Radio Frequency Identification (RFID)

Utilizes RFID for quick access to individualized modes and one-click card swiping to reduce setup time, enhance work efficiency and task focus.

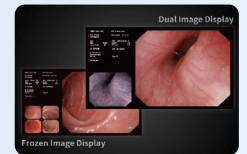


1920 x 1080p 2 Megapixel

Experience the PLAMYRA STV-300's immersive Full HD with 2MP sensor, FHD output. Enhance medical efficiency with clear 1080p visuals, improving accuracy in diagnostics and procedures.

Dual-Image Display

Simultaneously view CBI and regular images with PLAMYRA STV-300. No need to toggle modes; observe both in real-time on the 26-inch medical monitor. This enhances diagnosis accuracy and efficiency.



USB Storage

USB storage integrates HD picture capture, video recording, and keyboard connectivity. It displays keyboard input and enables efficient copying, enhancing usability and user experience.

PLAMYRA STV-300

Video Gastrosopes/Colonoscopes

Revolutionary Integration of a Waterproof Connector

Innovative wireless power supply connects light source and endoscope, simplifying detachment and washing. Streamlined design enhances convenience and efficiency for disinfection processes.



Experience Exceptional Forward Flushing Functionality

FHD endoscopes feature forward flushing for clear mucosa, aiding swift bleeding point detection. Professionals locate and treat concerns more efficiently, improving overall procedures.



A Wide View Angle & Compact Curvature Design

System's 145° view angle expands observation scope, accessible insertion part with short apex enhances visibility in cardia, fundus, and more, ensuring ease during procedures.

Comfortable & Customizable Lightweight Handle & Keys

Styker prioritizes functionality and user experience in endoscope design. Lighter handles reduce fatigue, customizable shortcut buttons accommodate individual usage, ensuring comfort and personalized functionality.

Functions and Features

Light Source	300W Xenon / 3LED
Chromoendoscopy	CBI Regular, CBI Indigo & CBI Aqua (3LED only)
Image Enhancement	Structure/Edge/Color
Brightness Adjustment	Auto/Manual
Digital Zoom	1/1.2/1.5/2x
IRIS	Peak/Average/Auto
Storage	USB
Dual Image Display	Two images
User Profile	Customizable RFID card

Video Gastrosopes Specifications

Model	Working Length	Diameter of distal end	Diameter of insertion tube	Diameter of instrument channel	Depth of field	View of field	Range of bending
VG-ST300J	1050mm	9.6mm	9.6mm	2.8mm	3-100mm	145°	U210°D90°L100°R100°
*VG-ST3002J	1050mm	10.5mm	10.5mm	2.8mm	3-100mm	145°	U210°D90°L100°R100°

(*: Forwarding water-jet)

Video Colonoscopes Specifications

Model	Working Length	Diameter of distal end	Diameter of insertion tube	Diameter of instrument channel	Depth of field	View of field	Range of bending
VC-ST300II	1300mm	12.8mm	12.8mm	3.7mm	3-100mm	145°	U180°D180°L160°R160°
VC-ST3002L	1650mm	12.8mm	12.8mm	3.7mm	3-100mm	145°	U180°D180°L160°R160°
o *VC-ST3003JI	1300mm	12.8mm	12.8mm	3.7mm	3-100mm	145°	U180°D180°L160°R160°
o *VC-ST3004JL	1650mm	12.8mm	12.8mm	3.7mm	3-100mm	145°	U180°D180°L160°R160°

(*: Forwarding water-jet) (o: Adjustable stiffness)

Image Processor: STV-300 Specifications

Power Supply:	Voltage: 100-240V AC Frequency: 50/60Hz
Size:	Dimension (W x H x D): 390*115*420mm Weight: 8.54kg
Medical Electrical Equipment Classification	Type of protection against electric shock: Class I
Output signals:	DVI*2, SDI*2, VIDEO*2, SYNC*1, Y/C*1, Y/G, Pb/B, Pr/R
(PIP): Input signal	VIDEO*1, Y/C*1
White balance:	Automatic
Digital chromoendoscopy:	HbE (Hemoglobin Enhancement)
Dual image display:	White light and chromoendoscopy
Structure enhancement:	1-8 levels (3 steps)
Edge enhancement:	1-8 levels (3 steps)
Color enhancement:	Red/Blue
Storage:	USB (Image and video)
IRIS mode:	Average/Peak/Auto
User preference control:	RFID
Patient information	Patient data: the following data can be displayed on the monitor using the keyboard: Patient name, sex, age.

Light Source: STL-300X Specifications

Power Supply	Voltage: 100-240VAC Frequency: 50/60Hz
Consumption electric power:	600VA
Size	Dimension (L x W x H): 420*390*165mm Weight: 15kg
Primary lamp	Xenon 300W
Life Indicator:	500H
Optical chromoendoscopy	CBI
Cooling	Forced-air cooling:
Brightness Control:	Manual/Auto
Air-feeding pump:	4 levels available (off, low, medium, high)

Light Source: STL-300 Specifications

Power Supply	Voltage: 100-240V AC Frequency: 50/60Hz
Consumption electric power:	300VA
Size	Dimension (L x W x H): 470*400*165mm Weight: 17kg
Illumination	3LED
Life indicator	10,000H
Chromoendoscopy	CBI Regular/Indigo/Aqua
Cooling	Forced-air cooling
Air-feeding pump:	4 levels available (off, low, medium, high)

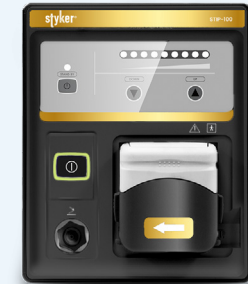
STV-300/STL-300
FHD Endoscope Imaging System

FHD endoscopy system with optical chromo endoscopy technique with LED and xenon lamp light source. Features a higher brightness and authenticity of colour.



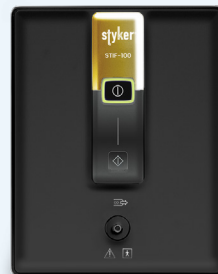
STIP-100
Endoscopic Irrigation

Easy to use, activate irrigation through foot switch or remote button. Ensures safety with automatic shut-off after 20 seconds or continuous water supply. Adjustable flow up to 500ml/min, with flow setting display and automatic setting memory.



STIF-100
Endoscopic CO₂ Insufflation

The intelligent air pressure control ensures secure flow, preventing high or low pressure issues and minimizing operational errors. With one-touch operation and user-friendly interface, it can be seamlessly integrated into the main body of the endoscopy system.



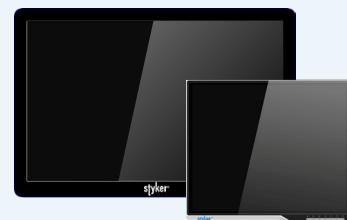
STLT-100
Automatic Leakage Tester

Latest cantilever design for easy loading and unloading, ensuring robustness, durability, and space-saving. Detect pinhole leaks early to significantly reduce the failure rate.



STM-200/300
Medical Grade Monitor

Medical grade high brightness monitor in different sizes available, all with a variety of most commonly used interfaces.



STT-100
Medical Trolley

Stainless Steel, 330mm*880mm*1085mm
4 Layers & Keyboard Drawer
Four-wheeled caster with locking mode
Overall dimension 1000(H) x 656(W) x 601 (D)

